

LEASEHOLD - SHARE OF  
FREEHOLD



Flat

# FLAT 11 HUNT COURT, 236 CHASE SIDE, LONDON, N14 4PG

Asking Price

**£425,000**

## FEATURES

- Share of Freehold with 103 year lease
- 2 Bedrooms & 2 Bathrooms
- Separate Lounge/Diner
- Garage and Off Street Parking
- 925 sq.ft
- Separate Kitchen
- Loft
- Lift



**RASH & RASH**

# 2 Bedroom Flat located in London

A spacious, bright, 2 bedroom, 2 bathroom flat on the 2nd (top) floor of a small block offering 925 sq.ft of living space. The property benefits from a separate kitchen/breakfast room, loft, lift, video entry phone, garage en-bloc, off-street parking and communal gardens. Situated in a prime location in Southgate, it is within level walking distance of local shops, cafes, restaurants and Southgate underground station (Piccadilly line).

Offered with a Share of Freehold and a 103 year lease. Service Charges are £2,400 pa.

Call us on

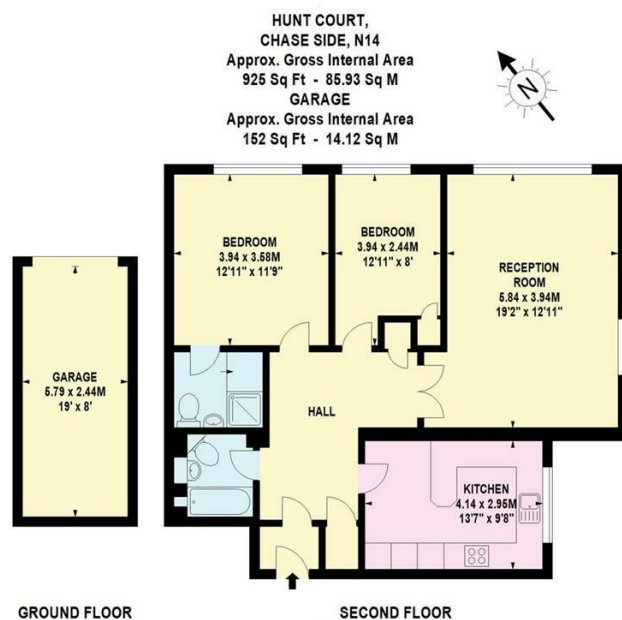
**02088822828**

[info@rashandrash.com](mailto:info@rashandrash.com)

<https://www.rashandrash.com/>

**Council Tax Band**

**D**



Energy Efficiency Rating		
	Current	Potential
Very energy efficient - lower running costs		
(92 plus) A		
(81-91) B		
(69-80) C	78	80
(55-68) D		
(39-54) E		
(21-38) F		
(1-20) G		
Not energy efficient - higher running costs		
England & Wales		
EU Directive 2002/91/EC		

Agents Note: Whilst every care has been taken to prepare these particulars, they are for guidance purposes only. All measurements are approximate and are for general guidance purposes only and whilst every care has been taken to ensure their accuracy, they should not be relied upon and potential buyers are advised to recheck the measurements.

**RASH & RASH**